

## MOUZAREF (Cu) (ORIENTAL ANTI-ATLAS, MOROCCO)

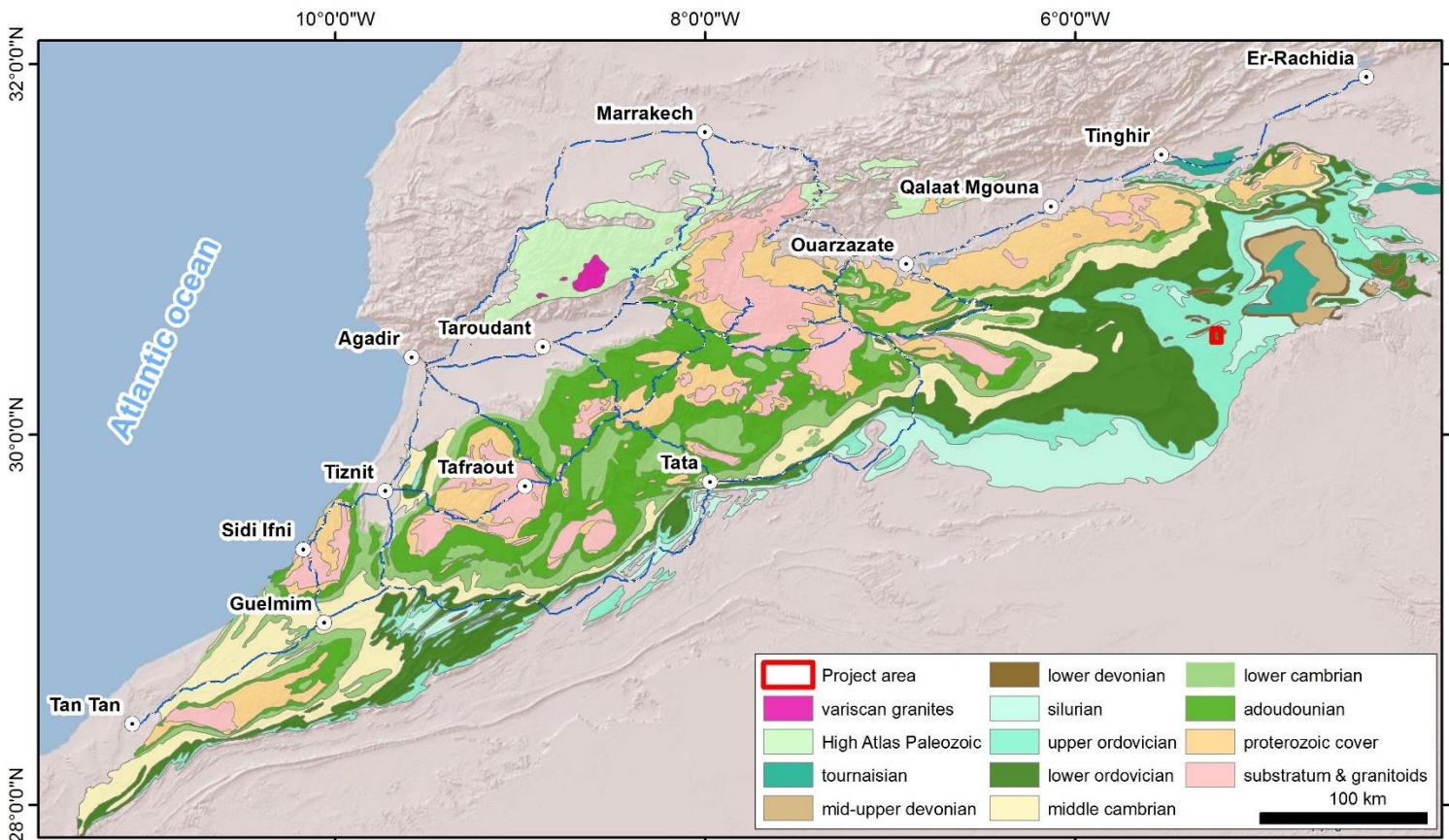
### Overview :

The Mouzaref sector is located in the Oumjerane region 80 km northeast of Zagora, and a few kilometers south of the Bounhass mine (Oumjerane). The Geological setting is similar to Oumjerane's copper deposit, which is also located close to the project area.

Target name	Mouzaref
Type of mineralization	Veins
Licence coverage	1 license exploitation (23 Km <sup>2</sup> )
Available data	Geological data/ Geophysical data
Grades	3% Cu
Dimensions	Length : 2 Km / Rooting : 125-150 m / varied thickness : 0.5 m to 2.5 m
Infrastructures	Road network, electrical network

### Geological setting and location :

The Mouzaref vein extends on a distance of almost 2 km long and with a N45 orientation. The dip ranges between 50° and 85° to the NW. The hosted rock consists of Devonian carbonate formations to the north of the structure and Silurian shale formation to the south.



Location and general geological setting of Mouzaref area

## Mineralization :

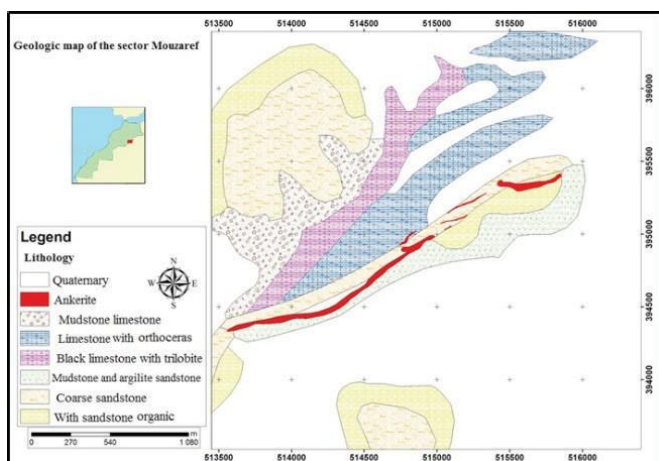
Copper is present as chalcopyrite and malachite, primarily hosted in quartz veins and ankerite. The latter represent the essential filling of the hosting vein, we found malachite as impregnations with sufficiently oxidized chalcopyrite flies. The copper mineralization represents a regional structural control favoured by the graben of Tismoumine-Zagora.



Sample with chalcopyrite taken in a drill hole in Mozaref

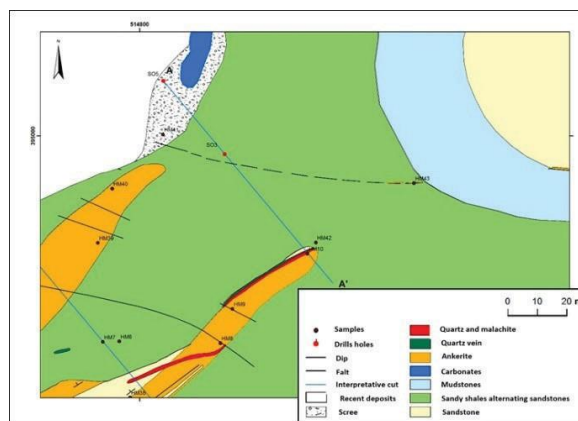
## Achieved Works and results :

Eight Drill holes were conducted in the Mouzaef area, and they intersected the mineralized structure. Sample analysis shows an average grade of 2.3% Cu within 2 m of thickness.

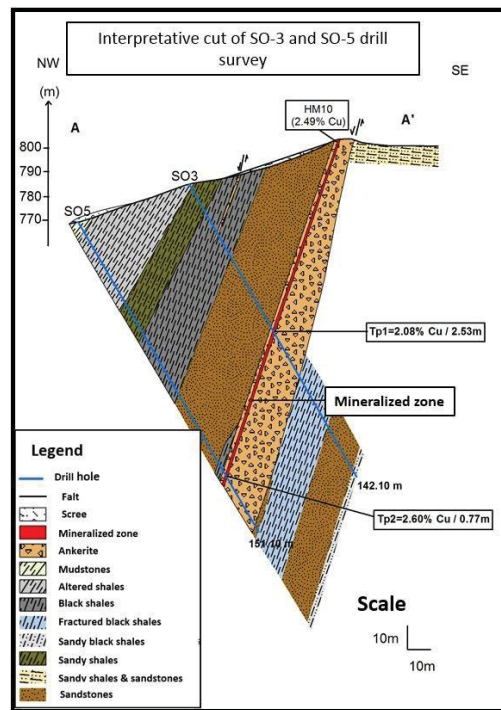


Geologic setting of the sector of Mouzaef

An interpretative section at scale 1/1000, of NW-SE direction and passing through the SO3 and SO5 drilling, crosses transversely the structure of Mouzaef. It shows a correlation between the data of the surface and those acquired by SO3 and SO5 drill holes, to view the extension of the outcrops in depth and their lithological and structural evolution. An ankerite dyke outcrop with a thickness of 0.7 m and a N45 ° strike and 70 ° NW dip, bearing malachite mineralization with a copper content of 2.49% Cu. The mineralization appears as chalcopyrite with weighted grades of 2.08% Cu and 2.60% with real thicknesses respectively of 2.53 and 0.77 m.



Location of the section (AA ' ) through the SO3 and SO5 drilling



Interpretative section of SO3 and SO5 drillholes

## Outlook :

Encouraging results of the first drilling work , coupled with encouraging results of the geophysical studies in the sector, demonstrate the possibility of lateral and deep extensions of the Mouzaef structures, located just south of the Oumjerane's copper mine.

For more information, please contact Ms.  
Amina BENKHADRA  
General manager  
5, Avenue Moulay Hassan- BP 99 - Rabat,  
Maroc Tél : + 212 5 37 23 98 98  
Fax : + 212 5 37 70 94 11  
E-mail : benkhadra@onhym.com  
Web site : www.onhym.com